

# FIMS 14.74 Upgrade Guide

## Overview

This document provides details on the process of upgrading a local, on-premise Foundation Information Management System (FIMS) installation to the latest version.

## Upgrade Notes

### About 14.74

**FIMS 14.74** is a patch release. **You must be on version 14.71, 14.72, or 14.73 to upgrade to 14.74.** If you are not on at least version 14.71, you must install that first. You can find the 14.71 installation on the downloads page of the Blackbaud website if needed.

The 14.74 patch release does not need to be installed from the database server, so other users do not need to exit **FIMS** during installation.

The 14.74 patch release includes all changes since 14.71.

**Note:** Single-user **FIMS** clients cannot use the patch update. Contact Support for a full installation.

### Progress Database

**FIMS version 14.74** supports **OpenEdge Progress version 11.7.5** and above. Check your Progress version in **FIMS** by selecting **Help > About FIMS**. Contact Support for any assistance needed with upgrading Progress.

**Note:** **FIMS versions 14.70** and greater are supported for use with **OpenEdge Progress 11.7.5** and above. For information on upgrading to **Progress 11**, see [Knowledgebase article 117586](#).

If you are currently on **Progress 11.6.4**, you can still upgrade to 14.74. Upgrading to **Progress 11.7.5** is not required, but it is the current recommended version for use with **FIMS**.

If your **FIMS** database server is **Windows Server 2019**, **Progress 11.7.5** is supported for use with that operating system.

If you are on **Progress 10**, **Progress 10** is not supported starting with **FIMS 14.70** and you will need to upgrade to a later version of Progress.

### Current IGAM Users

**If your IGAM version is older than IGAM 5.5, do not perform the upgrade.** Contact Support to schedule an IGAM update.

## Compatibility Notes

Please see **FIMS** system requirements documentation in the link below:

[FIMS System Requirements](#)

### Microsoft Windows Operating Systems

- Workstations must have **Microsoft Windows 8.1** or **10** installed. **Windows 10** is recommended.

#### Notes:

- **Windows 7** is no longer supported with **FIMS** due to end of support by Microsoft as of [1/14/2020](#).
- **Windows 8** is no longer supported with **FIMS** due to end of support by Microsoft as of 1/12/2016. Customers must move to **Windows 8.1** to remain supported. See [Windows Lifecycle FAQ](#).
- On January 10, 2023, **Windows 8.1** will no longer be supported with **FIMS** due to the end of support date announced by Microsoft. See [Windows Lifecycle Fact Sheet](#).
- **Windows 8.1 users:** Please note that **FIMS** is not certified for touch-screen functionality. If you notice any issues, please disable the touch-screen feature when using **FIMS**.
- Servers must have **Microsoft Windows 2012, 2012 R2, 2016** or **2019**.

#### Notes:

- FIMS runs on Microsoft Cloud (Azure) when set up as Windows client/server machines.
- As of [January 14, 2020](#), **Windows Server 2008 R2** is no longer supported with FIMS due to [end of support](#) announced by Microsoft.
- As of October 10, 2023, **Windows Server 2012** will no longer be supported by FIMS due to [end of support](#) announced by Microsoft.
- As of January 10, 2023, **Windows Server 2012 R2** will no longer be supported with FIMS due to [end of support](#) announced by Microsoft.
- **DonorCentral users:** Your **FIMS** server must have **Microsoft Windows Server 2012** or later to upload data to **DonorCentral**.
- **IGAM users:** **IGAM 3** is not compatible with **Windows 7** or later. If you are currently using **IGAM 3** for **FIMS** and want to use **Windows 7**, you must upgrade to **IGAM 5** or later. Contact Blackbaud Support for more information.
- **Progress OpenEdge:** **FIMS** is compatible with **Progress OpenEdge version 11.7.5**.

### Crystal Reports

Reports written in **Crystal Reports** prior to **version 13** are unable to connect to **Progress 11.x** databases. To use these reports, see [Knowledgebase article 187641](#) to upgrade to **Crystal 13** and convert your reports for **FIMS version 14.74**.

### OS Service Pack / Maintenance Pack Support

OS updates are not automatically certified but are supported where the OS vendor guarantees backwards compatibility with the baseline OS level. Certification of OS updates may be performed if the backwards guaranteed compatibility of the OS Service Pack / Maintenance Pack is questionable.

### Microsoft Office

**Office 365** users, please note that only a desktop installation of **Microsoft Office** connected to **Office 365** is fully compatible with **FIMS**. The online version of 365 is not compatible. See the following article for details:

## What MS Office version is fully compatible with FIMS?

### Notes:

- **Microsoft Office 2007** is [no longer supported by Microsoft](#) or **FIMS**.
- As of October 13, 2020, **Microsoft Office 2010** is no longer supported due to the [end of support date](#) announced by Microsoft.
- As of April 11, 2023, **Microsoft Office 2013 SP1** will no longer be supported due to the [end of support date](#) announced by Microsoft.

## Support

### Need Help or Have Questions?

If you have questions or need assistance, please contact Support.

**Support Hours:** M-F, 8:30 am – 8:00 pm ET

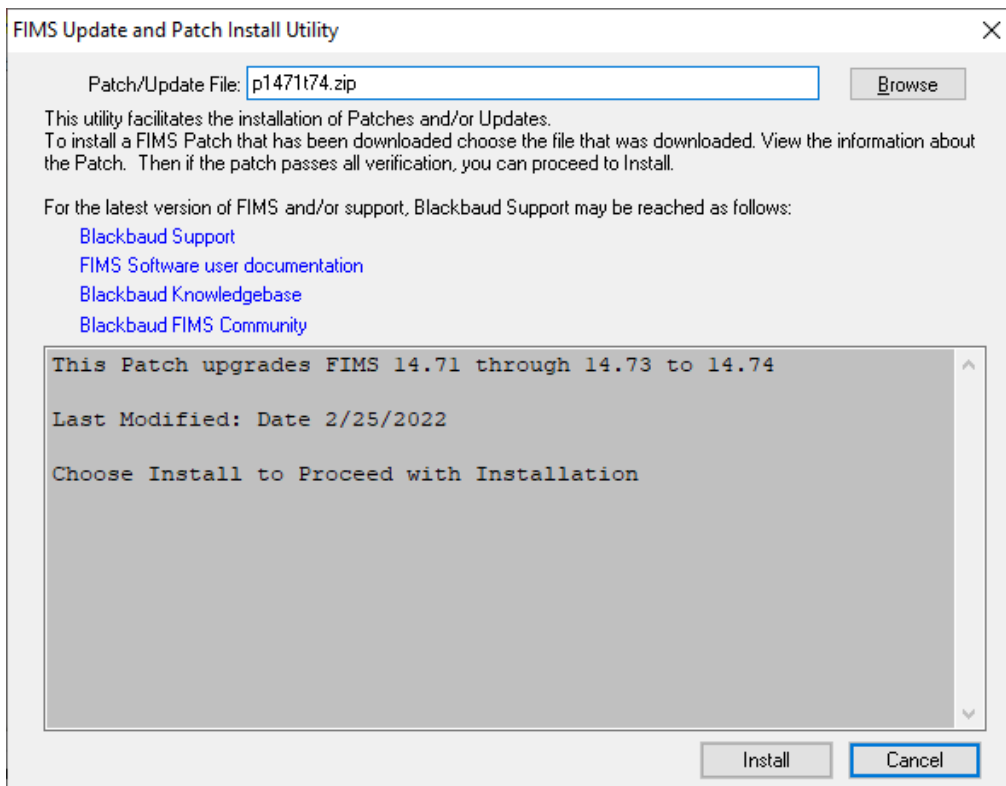
**Phone:** (800) 468-8996, option 1

**Online:** Visit Case Central at <https://www.blackbaud.com/casecentral/casesearch.aspx>. Click the **Case** tab at the top and click **Create New Case**.

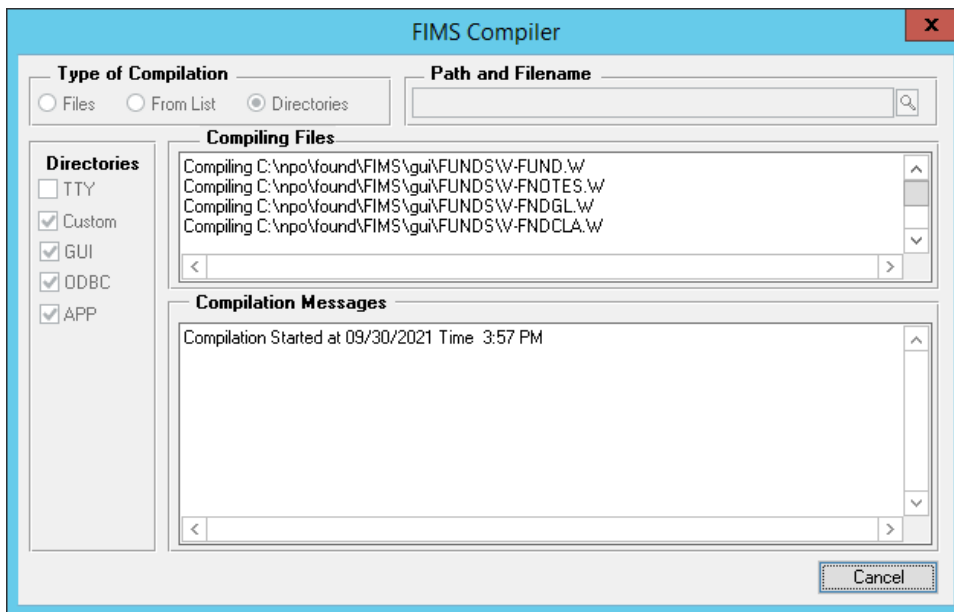
## Upgrade to the FIMS 14.74 patch

**Prerequisite:** You must be on version **14.71, 14.72, or 14.73** to install version **14.74**.

1. Download **p1471t74.zip** from [Blackbaud Downloads](https://www.blackbaud.com/support/downloads/downloads.aspx) (<https://www.blackbaud.com/support/downloads/downloads.aspx>) to any workstation where you'll apply the update.
2. Copy the **FIMS** patch file to the server or workstation on which the patch is being installed.
  - **DO NOT unzip the file**
3. Log in to **FIMS**.
4. Open **Tools > System Utilities > FIMS Update and Patch Utility**.
5. Click **Browse** and select the patch file named **p1471t74.zip**.
6. Click **Install**.



7. You will see files being compiled such as in this example from a previous upgrade version:



**If you have compile errors during the installation, please create a support case.**

8. **FIMS** will close and re-open when the patch is complete.

9. In **FIMS**, select **Help> About FIMS** to verify that both the **FIMS** version and the **DB** Version are **14.74**.

**Note:** You do not need to run the patch on each workstation. Once you run it on one workstation other users will see the updated version.